



Academic Computer Centre
CYFRONET AGH



Jacek Chudzik, Andrzej Zemła

Supporting open science, technical aspects of
data repositories deployment and
management



Open source research data repository software



Researchers

Enjoy full control over your data. Receive *web visibility, academic credit, and increased citation counts*. A personal Dataverse collection is easy to set up, allows you to display your data on your personal website, can be branded uniquely as your research program, makes your data more discoverable to the research community, and satisfies data management plans. [Want to set up your personal Dataverse collection?](#)



Journals

Seamlessly manage the submission, review, and publication of data associated with published articles. Establish an *unbreakable link* between *articles in your journal* and *associated data*. Participate in the open data movement by using a Dataverse collection as part of your journal data policy or list of repository recommendations. [Want to find out more about journal Dataverse collections?](#)



Institutions

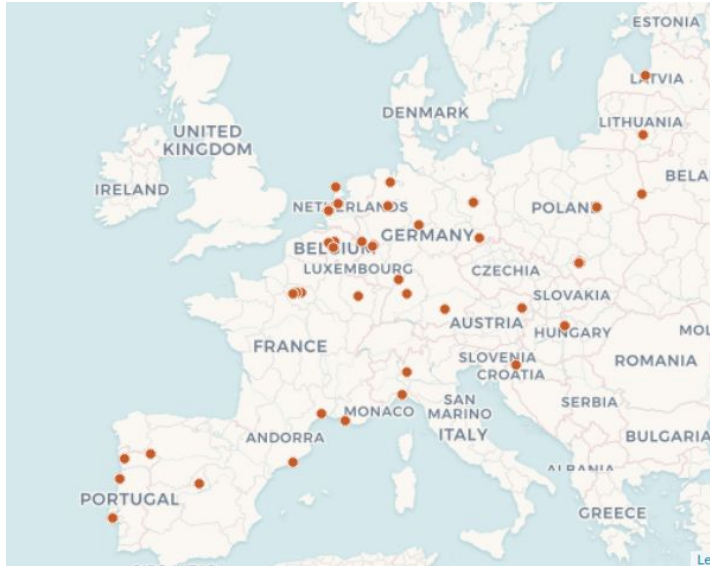
Establish a research data management solution for your community. Federate with a growing list of Dataverse repositories worldwide for increased discoverability of your community's data. Participate in the drive to set norms for sharing, preserving, citing, exploring, and analyzing research data. [Want to install a Dataverse repository?](#)



Developers

Participate in a vibrant and growing community that is helping to drive the norms for sharing, preserving, citing, exploring, and analyzing research data. Contribute code extensions, documentation, testing, and/or standards. *Integrate research analysis, visualization and exploration tools*, or other research and data archival systems with the Dataverse Project. [Want to contribute?](#)

- Numerous installations
- Community support



- Code contribution
- Global problem - one solution

Releases **Tags**

Tags

v6.2 xxx

Verified

[last week](#) [a218417](#) [zip](#) [tar.gz](#) [Notes](#) [Downloads](#)**v6.1** xxx

Verified

[on Dec 12, 2023](#) [1f9e19c](#) [zip](#) [tar.gz](#) [Notes](#) [Downloads](#)**v6.0** xxx

Verified

[on Sep 8, 2023](#) [5f2413b](#) [zip](#) [tar.gz](#) [Notes](#) [Downloads](#)**v5.14** xxx

Verified

[on Aug 4, 2023](#) [9f4d4db](#) [zip](#) [tar.gz](#) [Notes](#) [Downloads](#)**v5.13** xxx

Verified

[on Feb 14, 2023](#) [79d6e57](#) [zip](#) [tar.gz](#) [Notes](#) [Downloads](#)**v5.12.1** xxx

Verified

[on Nov 4, 2022](#) [cf98431](#) [zip](#) [tar.gz](#) [Notes](#) [Downloads](#)**v5.12** xxx

Verified

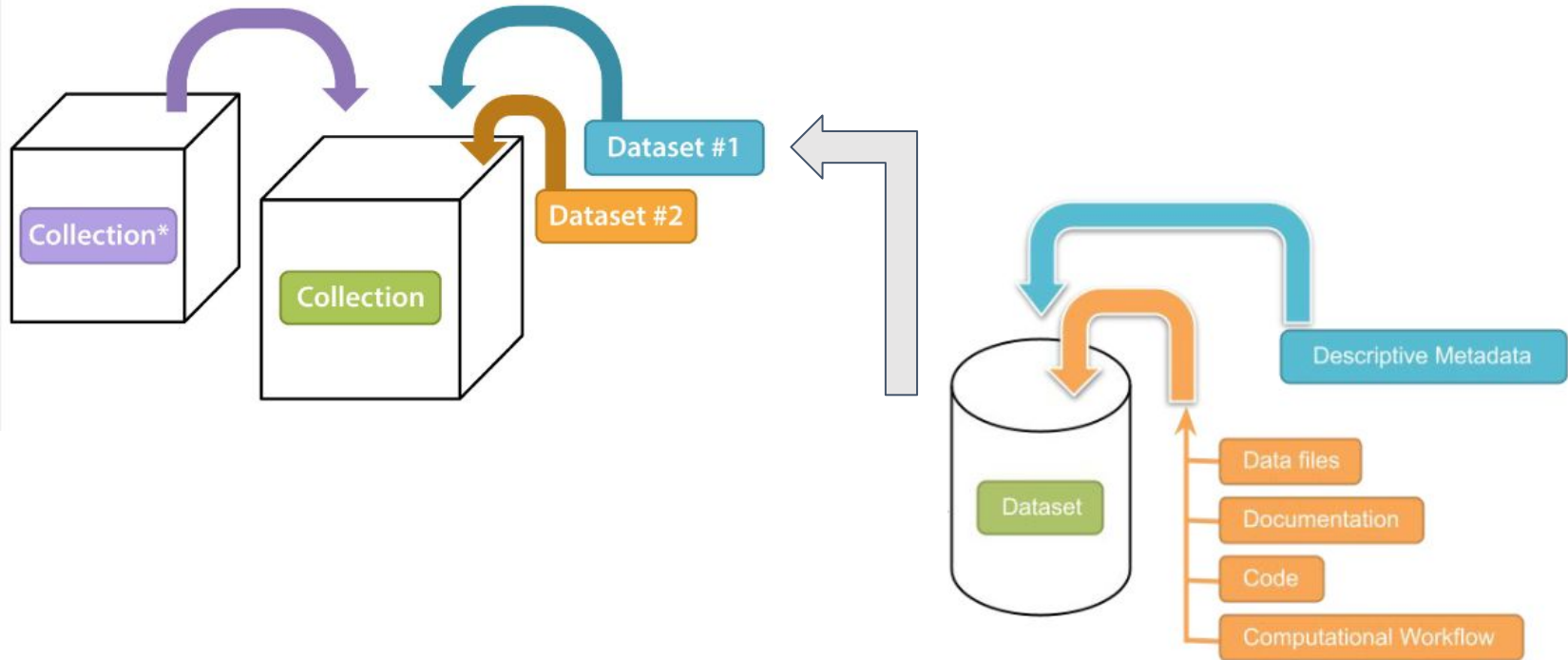
[on Oct 4, 2022](#) [71341c8](#) [zip](#) [tar.gz](#) [Notes](#) [Downloads](#)**v5.11.1** xxx

Verified

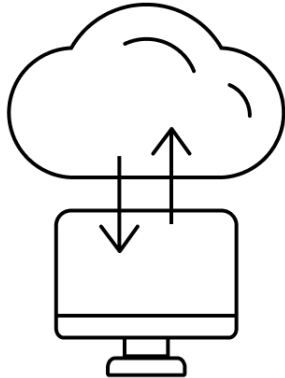
[on Aug 2, 2022](#) [02e3e92](#) [zip](#) [tar.gz](#) [Notes](#) [Downloads](#)**v5.11** xxx

Verified

[on Jun 13, 2022](#) [21ac7e1](#) [zip](#) [tar.gz](#) [Notes](#) [Downloads](#)



- Virtual machine
- HTTP server
- Firewall
- Java
- Ansible
- Rserve
- ...and more





Open source object-relational database
<https://www.postgresql.org/>

Payara Server Enterprise is an open source application server
<https://www.payara.fish/>



Open source enterprise search platform
<https://solr.apache.org/>



Test dataverse

 Metrics

0 Downloads

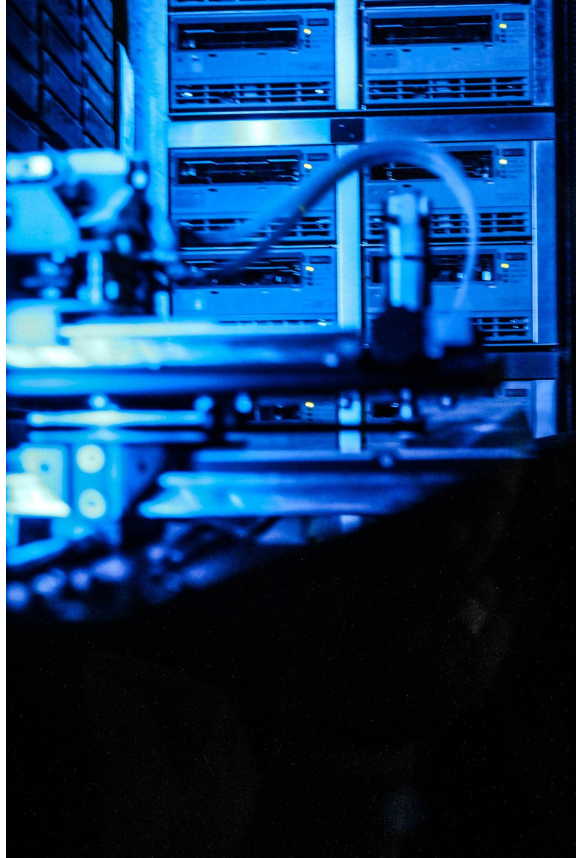
 Contact  Share Edit ▾

The root dataverse.

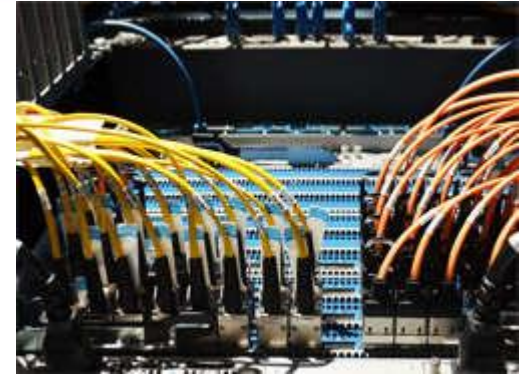
[Advanced Search](#)[+ Add Data ▾](#)  **Dataverses** (0)  **Datasets** (0)  **Files** (0)

This dataverse currently has no dataverses, datasets, or files. You can add to it by using the Add Data button on this page.

- Testing application, new configuration, updates, deployment of a new version
- Custom solutions
- Reproducing potential errors
- Pre-implementation readiness (data steward training)



- Why objective storage?
 - Cost-Effectiveness
 - Scalability
 - Durability and Reliability
 - Accessibility



- High-efficiency network
 - The PIONIER network enables communication with major national and foreign computing centres. International connectivity is achieved through the GEANT scientific network
 - The data link layer is implemented using Juniper Networks and Cisco Systems equipment while the hardware layer involves 10 Gigabit Ethernet technologies
 - reliability of over 99%

Integration with Central Authentication Database:

- **SSO** - Single Sign-On
- Managing one account (creating, deleting)
- Privilege management

Configuration:

- **Shibboleth**, identity framework for identity management across multiple systems or organizations
- **SAML** is a standard protocol used for secure exchange of authentication and authorization

Log In

Log in or sign up with your institutional account – more information about account creation. Leaving your institution? Please contact Harvard Dataverse Support for assistance.

Your Institution

Cracow University of Technology

Institute of Nuclear Physics Polish Academy of Sciences

Other options

[Sign up for a Dataverse account.](#)

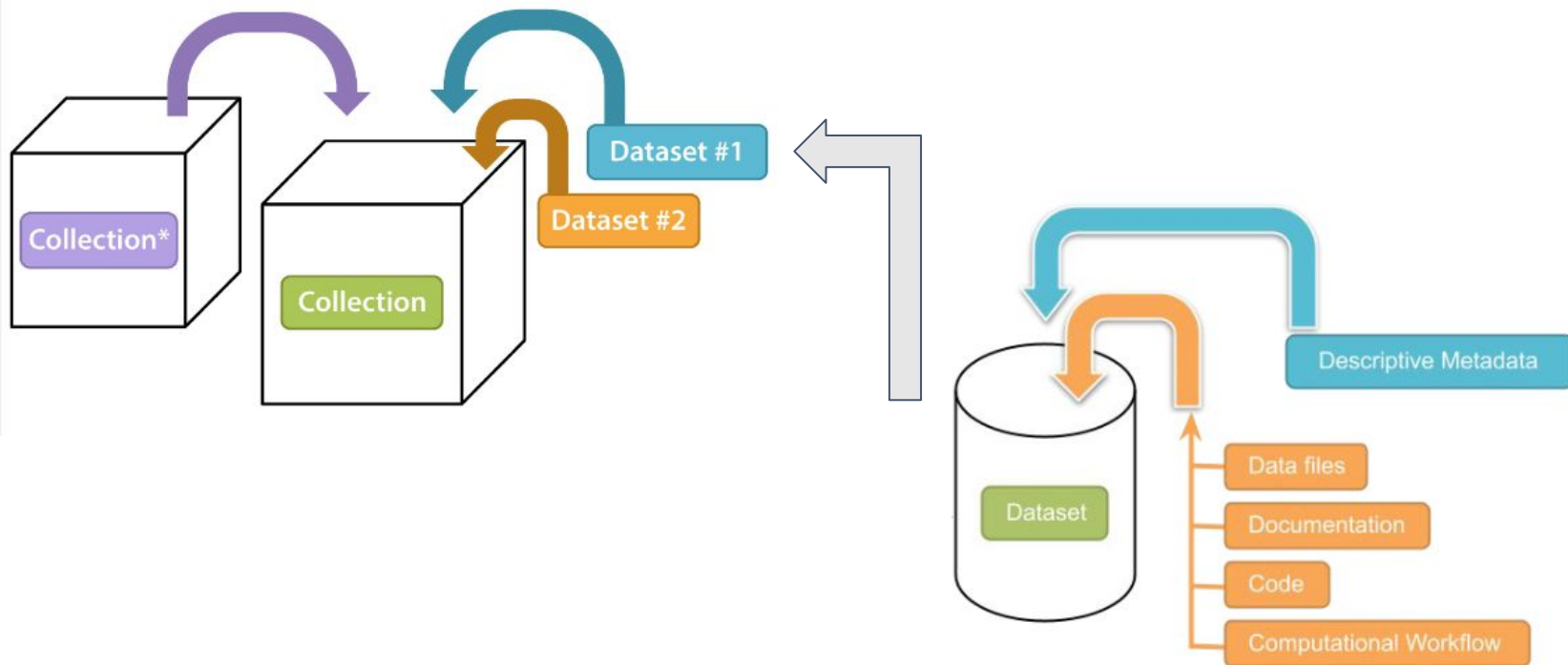


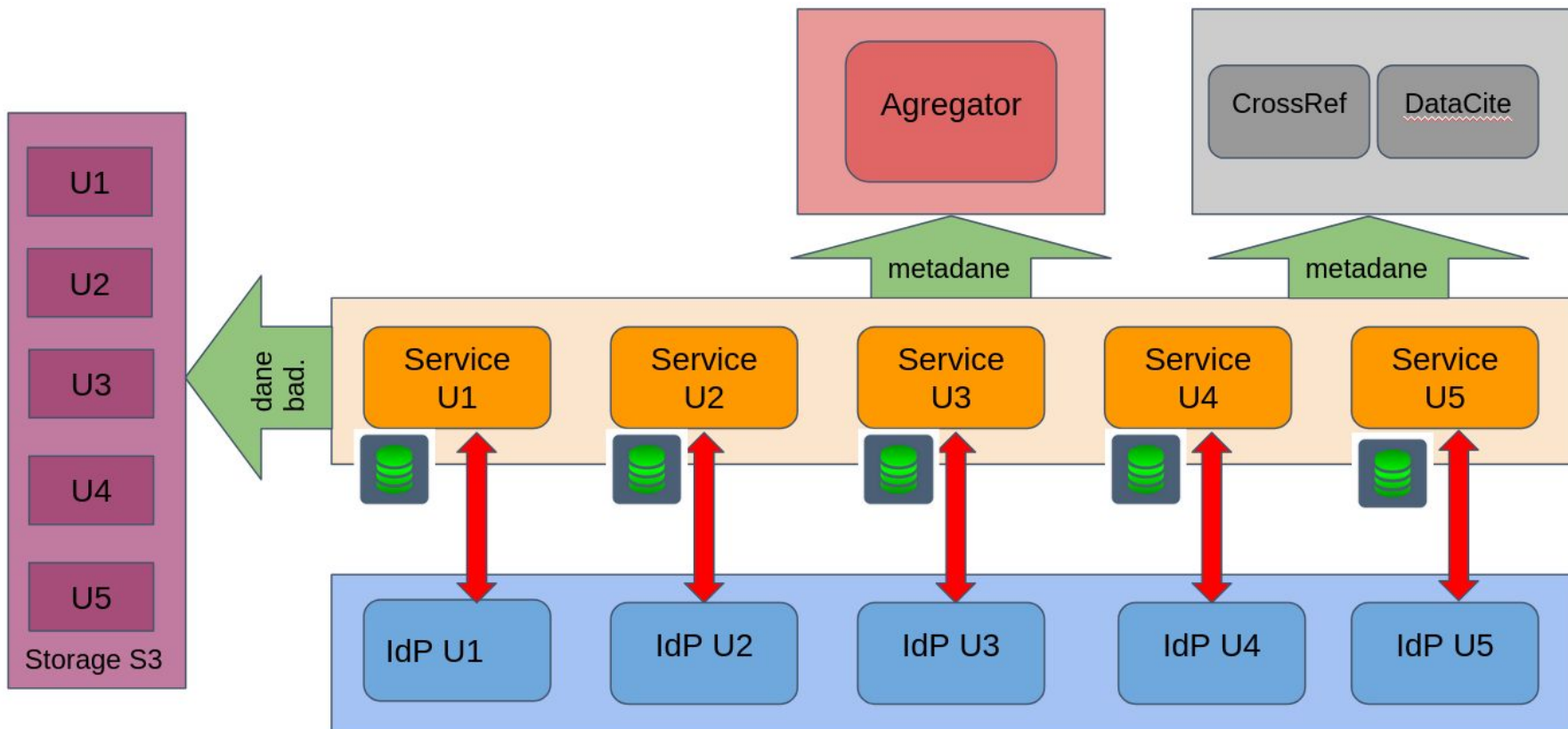
Shibboleth.



- Backup policy
 - Open science = big data
 - Data protection (risk management)
 - Data repositories requirements (certification)
- Monitoring
 - SSL/TLS certificates, usage of resources: CPU, RAM, storage
- Software version control
- CVE tracking
 - Continuous monitoring
 - Patch management







- Visual identity
 - logo
 - colours
 - typography
- Custom design elements
- Brand consistency

RODBUK

Web accessibility

The Academic Computer Centre Cyfronet AGH undertakes to ensure the accessibility of website rodbuk.pl (<https://rodbuk.pl/>) in accordance with the provisions of the Act of April 4, 2019 on Digital Accessibility of Websites and Mobile Applications of Public Entities.

Date of website publication: 2023-02-28

The declaration was last reviewed and updated: 2023-09-25

Status in terms of compliance with the Act

The website is partially compliant with the Digital Accessibility of Public Entities' Websites and Mobile Applications Act due to the incompatibilities or exclusions listed below.

Content not available

- With some documents for downloads, there is no indication of the language of the document. Only the title of the document can suggest what language the document was created in,
- Some graphic elements do not have alternative text,
- Some site elements do not comply with the minimum requirements for contrast,
- Some elements do not inform about the change of context (transition to another page),
- Some text elements may not comply with the minimum line height requirement,
- Some pages may not contain headers.,
- Graphical components of institutional collections, and also datasets, i.e. data files with metadata describing them, are made available within the repository's website by its users, so they represent content that, while in the possession of Academic Computer Centre Cyfronet AGH, has not been created by or for Academic Computer Centre Cyfronet AGH or acquired by it, in accordance with Article 32, para. 5(a) of the Act, it does not apply to those elements of the website.

Keyboard shortcuts

You can use standard browser keyboard shortcuts on the website.

Preparation of the accessibility declaration

The declaration was prepared on: 2023-11-22

```
/* Main containers */
html,
body {
  font-family: 'Poppins', sans-serif;
  margin: 0;
  padding: 0;
}
body {
  padding-bottom: var(--dv-footer-h-mobile);
  background-color: var(--dv-bg-primary);
  color: var(--dv-text);
}
@media (min-width: 768px) {
  body {
    padding-bottom: var(--dv-footer-h-desktop);
  }
}

/* General styling */
a {
  color: var(--dv-link) !important;
}
a.btn-primary {
  color: white !important;
}
```

```
<!-- Add / Remove header's border on scroll -->
<script>

window.addEventListener("scroll", function(event){
  var scroll = this.scrollY;
  var nav = document.getElementById("navbarFixed");
  if(scroll > 10) {
    nav.style.borderBottom = "solid 1px #677e7e";
    nav.style.boxShadow = "4px 4px 6px #000000f";
  } else {
    nav.style.border = "none";
    nav.style.boxShadow = "none";
  }
});

var nav = document.getElementById("navbarFixed");
nav.style.border = "none";
nav.style.boxShadow = "none";
</script>

<!-- Carousel of universities logos -->
<script>

var changeImgTime = 5000;

function changeImg(){
  const slides = document.getElementById("hero-logo-carousel").querySelector("[data-slides]");
  const activeSlide = slides.querySelector("[data-active]");

  let newIndex = [...slides.children].indexOf(activeSlide) + 1;
  if(newIndex >= slides.children.length) newIndex = 0;

  slides.children[newIndex].dataset.active = true;
  delete activeSlide.dataset.active;

  setTimeout("changeImg()", changeImgTime);
}

window.onload = changeImg;
</script>

<!-- Custom translations -->
<script>
{
  const t = (id, content) => {document.getElementById(id).innerHTML = content;}

  const langPL = document.querySelector("[title='Język']");

  if(langPL)
  {
    // hero.block
    t("hero-title", "Repozytorium Otwartych Danych Badawczych Uczelni Krakowskich");
    t("hero-logo-title", "Repozytorium Otwartych Danych Badawczych Uczelni Krakowskich");
  }
}
</script>
```

HTML



CSS



JavaScript



Brand the application with landing page & custom UI



Ensure web accessibility



**Serve static documents
& custom URLs**

RODBUK

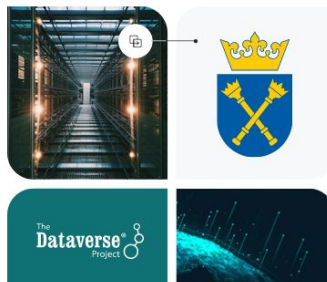
RODBUK Cracow Open Research Data Repository

RODBUK was founded on the initiative of Board of Directors of the Cracow Library Group.

RODBUK is co-created by six Cracow universities:

- AGH University of Krakow,
- University of Physical Education in Krakow,
- Cracow University of Technology,
- Krakow University of Economics,
- Jagiellonian University in Kraków,
- University of the National Education Commission, Krakow.

User Guide Support English ▾



Search all dataverses...

Search

View all data >

Deposit data in your Institutional Collection:



AGH University
of Krakow



Jagiellonian
University
in Kraków



Cracow University
of Technology



Krakow University
of Economics



uken
University of the
National Education
Commission,
Krakow



University
of Physical
Education
in Krakow

...is final product possible?

j.chudzik@cyfronet.pl

a.zemla@cyfronet.pl



Thank you for your attention

